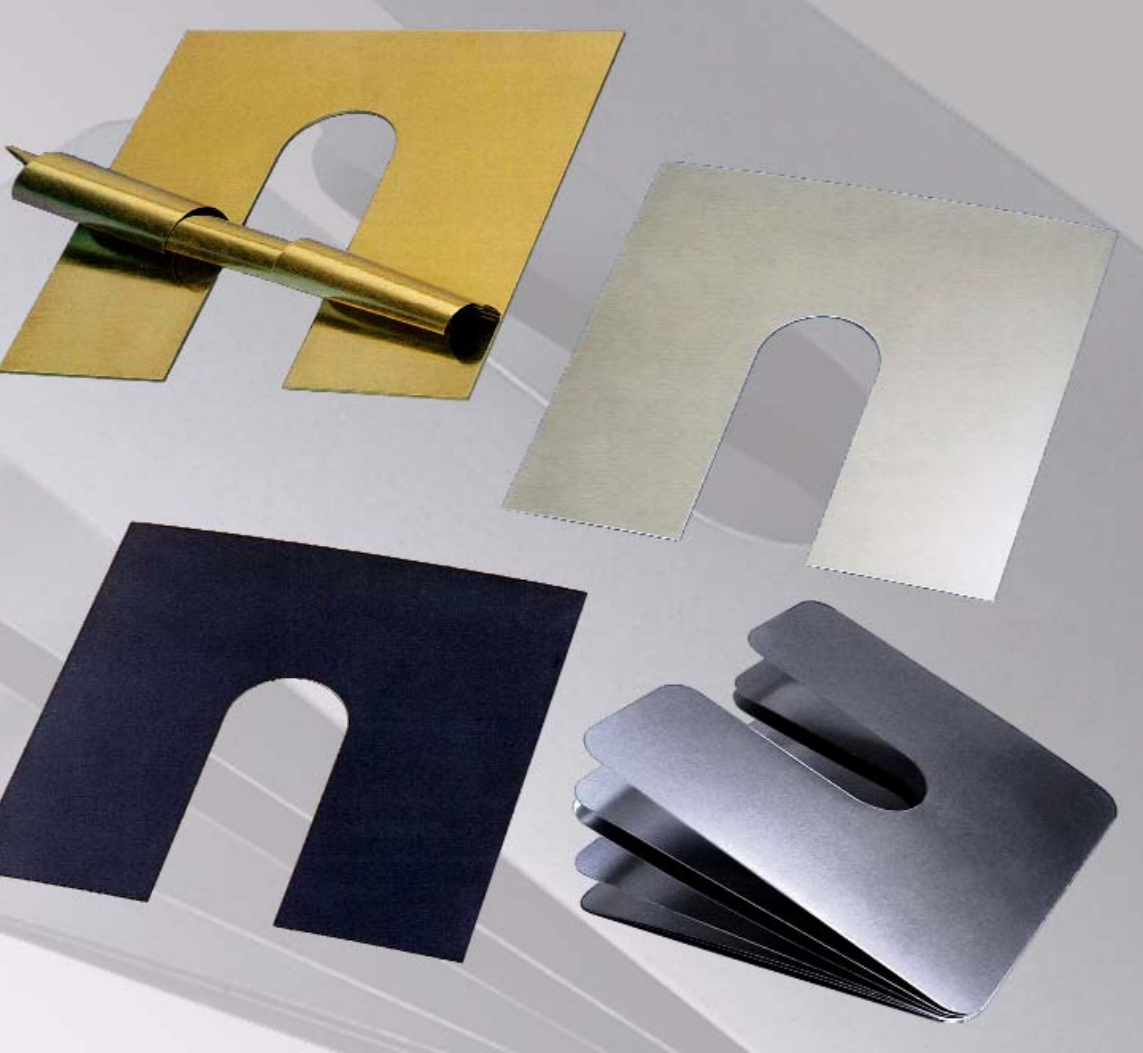




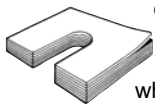
STANDARD U SHIMS

LAMIPACK
PEELPACK
SINGLEPACK

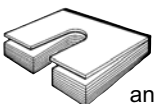


STANDARD LAMIPACK, PEELPACK & SINGLEPACK U SHIMS

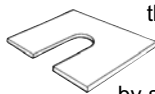
Lamipack peelable shims are laminated adjustment shims of compact appearance, with standard dimensions. They consist of basic leaves of a different thickness on each side, joined together by gluing over the whole surface. In the shape of a U and with a total thickness of 1 mm, Lamipack peelable shims consist of 8 leaves of 0.1 mm and 4 leaves of 0.05 mm. Each basic leaf can be peeled off very easily, until the exact thickness desired is obtained.



Peelpack separable shims are a set of foils joined together by a film of adhesive applied only to the block. They have the advantage that they can be peeled off very easily by hand, without tools, until the desired dimension is obtained. Each basic leaf removed can be used as an individual shimming component. In the shape of a U and with a total thickness of 1 mm, Peelpack separable shims consist of 8 leaves of 0.1 mm and 4 leaves of 0.05 mm.



Singlepack compact shims are solid shims, with standard dimensions, in the shape of a U, and are available in many thicknesses:
0.025, 0.05, 0.1, 0.2, 0.3, 0.4, 0.5, 0.7, 1, 2, 3 and 4 mm. Any intermediate thickness can be obtained by stacking.



Standard shims are very often used for the alignment of transmission shafts between an engine and a load. They are available in steel, stainless steel and brass, but also in composite material on request.

ADVANTAGES:

Lamipack

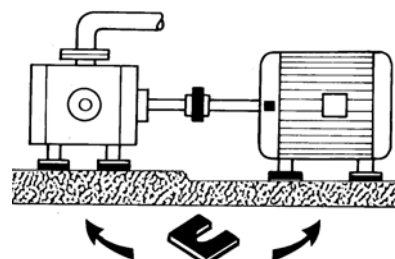
- Very high accuracy
- Dual composition (adjustment in 0.1 mm or 0.05 mm steps)
- In stock and rapidly available

Peelpack

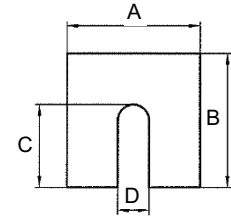
- Pre-stacking: high accuracy
- In stock and rapidly available
- Peelable by hand, without tools

Singlepack

- Low cost price
- Accuracy obtained by stacking: any thickness can be obtained by stacking.

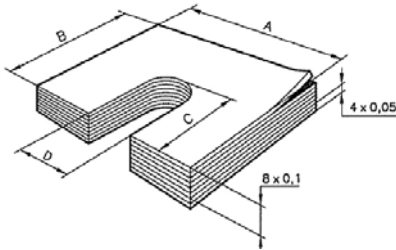


The tables below give the technical characteristics of the three different types of standard shims: Lamipack, Peelpack and Singlepack.



LAMIPACK

Laminated peelable U shape shim



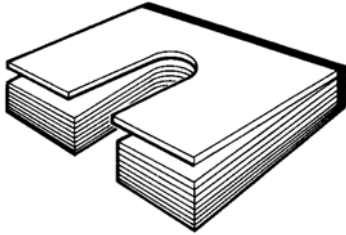
THICKNESS

Standard total thickness = 1 mm with 4 elements of 0,05 and 8 elements of 0,1 mm. Different thicknesses and shim compositions are available on demand.

Reference by material				Standard dimensions (mm)			
Steel	Stainless steel	Brass	Composite	A	B	C	D
LPA1	LPI1	LPL1	LPC1	43	43	27,5	12
LPA2	LPI2	LPL2	LPC2	48	48	31	14
LPA3	LPI3	LPL3	LPC3	53	53	33,5	14
LPA4	LPI4	LPL4	LPC4	68	68	42	16
LPA5	LPI5	LPL5	LPC5	83	83	51,5	20
LPA6	LPI6	LPL6	LPC6	98	98	61,5	25
LPA7	LPI7	LPL7	LPC7	118	118	74	30
LPA8	LPI8	LPL8	LPC8	200	200	100	36

PEELPACK

Set of foils connected to each other by a film of glue at the base of the U



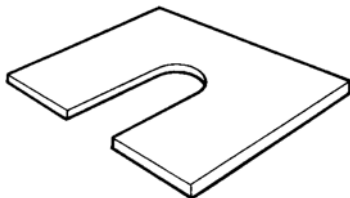
THICKNESS

Standard total thickness = 1 mm with 4 elements of 0,05 and 8 elements of 0,1 mm. Different thicknesses and shim compositions are available on demand.

Reference by material			Standard dimensions (mm)			
Steel	Stainless steel	Brass	A	B	C	D
PPA1	PPI1	PPL1	43	43	21,5	12
PPA2	PPI2	PPL2	48	48	24	14
PPA3	PPI3	PPL3	53	53	26,5	14
PPA4	PPI4	PPL4	68	68	34	16
PPA5	PPI5	PPL5	83	83	41,5	20
PPA6	PPI6	PPL6	98	98	49	25
PPA7	PPI7	PPL7	118	118	59	30
PPA8	PPI8	PPL8	200	200	100	36

SINGLEPACK

Solid U shape shim



THICKNESS

Available in the following thicknesses: 0,025 - 0,05 - 0,1 - 0,2 - 0,3 - 0,4 - 0,5 - 0,7 - 1 - 2 - 3 et 4 mm (for steel, stainless steel and brass) 0,05 - 0,1 - 0,2 - 0,3 - 0,4 - 0,5 et 1mm (for composite material).

Any other thicknesses can be obtained by stacking.

Reference by material				Standard dimensions (mm)			
Steel	Stainless steel	Brass	Composite	A	B	C	D
SPA1	SPI1	SPL1	SPC1	43	43	27,5	12
SPA2	SPI2	SPL2	SPC2	48	48	31	14
SPA3	SPI3	SPL3	SPC3	53	53	33,5	14
SPA4	SPI4	SPL4	SPC4	68	68	42	16
SPA5	SPI5	SPL5	SPC5	83	83	51,5	20
SPA6	SPI6	SPL6	SPC6	98	98	61,5	25
SPA7	SPI7	SPL7	SPC7	118	118	74	30
SPA8	SPI8	SPL8	SPC8	200	200	100	36

Jicey, Lamipack, Peelpack, Singlepack and the Jicey logo are registered trademarks